

# Backpack Laser CL 20 Q

## Mobile Compact Laser

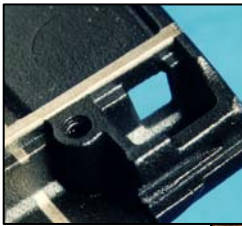


CL 20 Q

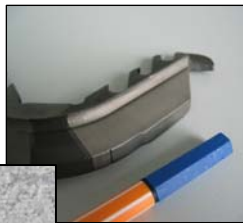
- ❑ Laser system for accurate cleaning of technical surfaces
- ❑ No damaging of metallic surfaces
- ❑ Diode pumped solid-state laser
- ❑ Wireless battery powered operation possible (optional)
- ❑ Low noise special air cooling system
- ❑ Large operating distance (up to 500mm)
- ❑ Average laser power up to 20W
- ❑ Laser class 4 product

### Application Examples

De-coating



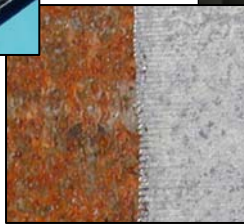
Cleaning



Sandstone



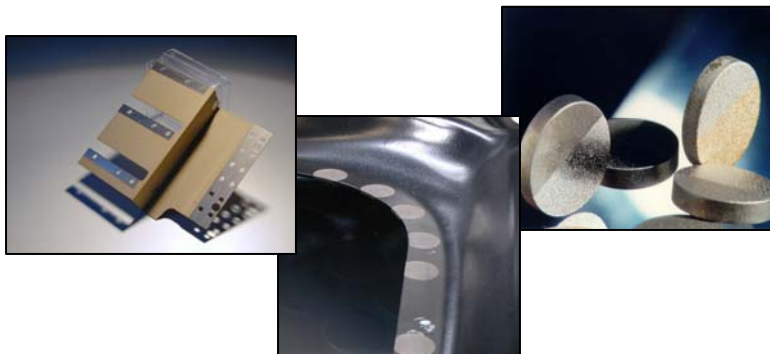
Rust removal



Pre-treatment for adhering and coating



Extremely accurate paint-stripping of metallic surfaces



Clean-Lasersysteme GmbH ■ Kaiserstraße 100 ■ D-52134 Herzogenrath/Aachen  
 Telefon +49(0)2407/9097-0 ■ Fax +49(0)2407/9097-11  
 e-mail info@cleanlaser.de internet www.cleanlaser.de

**CIPROCESS**  
 Innovative Cleaning and Process Solutions

CIPROCESS Ltd, T. +44(0)20-8805-5555 F. +44 (0)20-443-3969 E. info@ciprocess.co.uk W. www.ciprocess.co.uk

# CL 20 Q

## Price and Technical Data



Optical system with remote control box (Exemplary study)



Supporting frame with power aggregate (Exemplary study)

### Basic System: CL 20 Q

- Low noise cooling system
- Laser optics with large operating distance (f = 500)
- Fiber 2m providing high flexibility

### Options:

- Battery Pack
- Integrated laser pointer

**Running costs per hour :**  
**0,23 Euro (CL 20 Q)**

Energy: ~0,03 Euro (0,2 kWh)  
 Service\*: ~0,20 Euro  
 Total:=> ~0,23 Euro

\* (shared service, spare parts and maintenance costs)



CL 20 Q	Technical Data
Size (d x w x h) [mm³]	Approx. 240 x 200 x100
Weight (approx.) [kg]	12 kg incl. storage battery pack
Cooling system	Internal air cooling system
Specified power of the beam source [W]	20
Wavelength [nm]	1062
Power supply (European version)	110 V /230 V
Maximal power consumption [kWh]	200
Minimum / Maximum ambient temperature [°C]	5 - 40
Humidity [%]	10 - 95
Laser class	4